



**Important
information
on A&E
admissions**

Spital Bülach



**Accident and emergency (A&E)
department opening hours**

A&E is there for patients around the clock,
365 days a year.

Urgent care opening hours

Monday to Friday 8 am to 9 pm
Saturday and Sunday 9 am to 9 pm

Airport Medical Centre opening hours

Zurich Airport
Open daily 7:30 am to 7 pm

Outside the urgent care opening hours,
all emergency patients are treated in
the A&E department at Bülach Hospital.

Spital Bülach



EMERGENCY 

Dear Patient,

You will be examined shortly by an emergency specialist. After receiving initial care, you will be assigned to **urgent care** or **A&E**.

The emergency team wishes you a speedy recovery.



One accompanying person per patient

Due to the complexity of the situation, the person accompanying you cannot be present during the examination. They may join you as soon as the examination is complete.

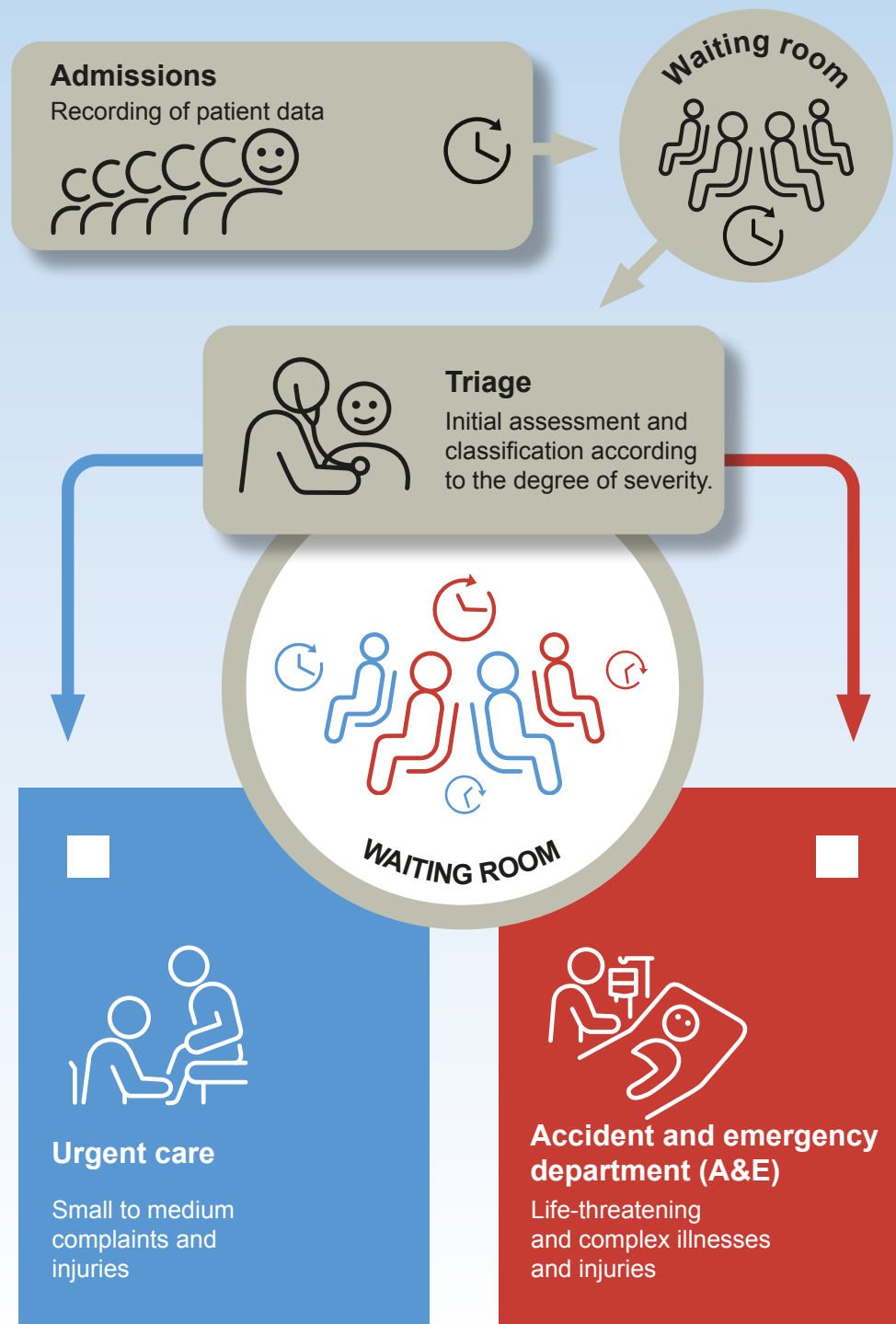


We recommend using our **free Wi-Fi**. Please ask at the admissions desk to find out how to log in.



Your opinion is important to us

You will receive a text message in the next few days asking you to rate the quality of treatment you received.



Waiting times

After the initial assessment, waiting times for treatment vary according to the place of treatment.

Urgent care

Patients are treated on a first come, first served basis.

A&E

Treatment is based on the severity of the case.

You may leave the waiting room while you wait. Please inform the admissions desk. The admissions desk will give you a device that will notify you as soon as you are called for treatment.

Patients are collected from the waiting room.

Our team will do its best to treat you as quickly as possible. Due to the large number of patients, waiting times may be longer.

Thank you for your understanding